

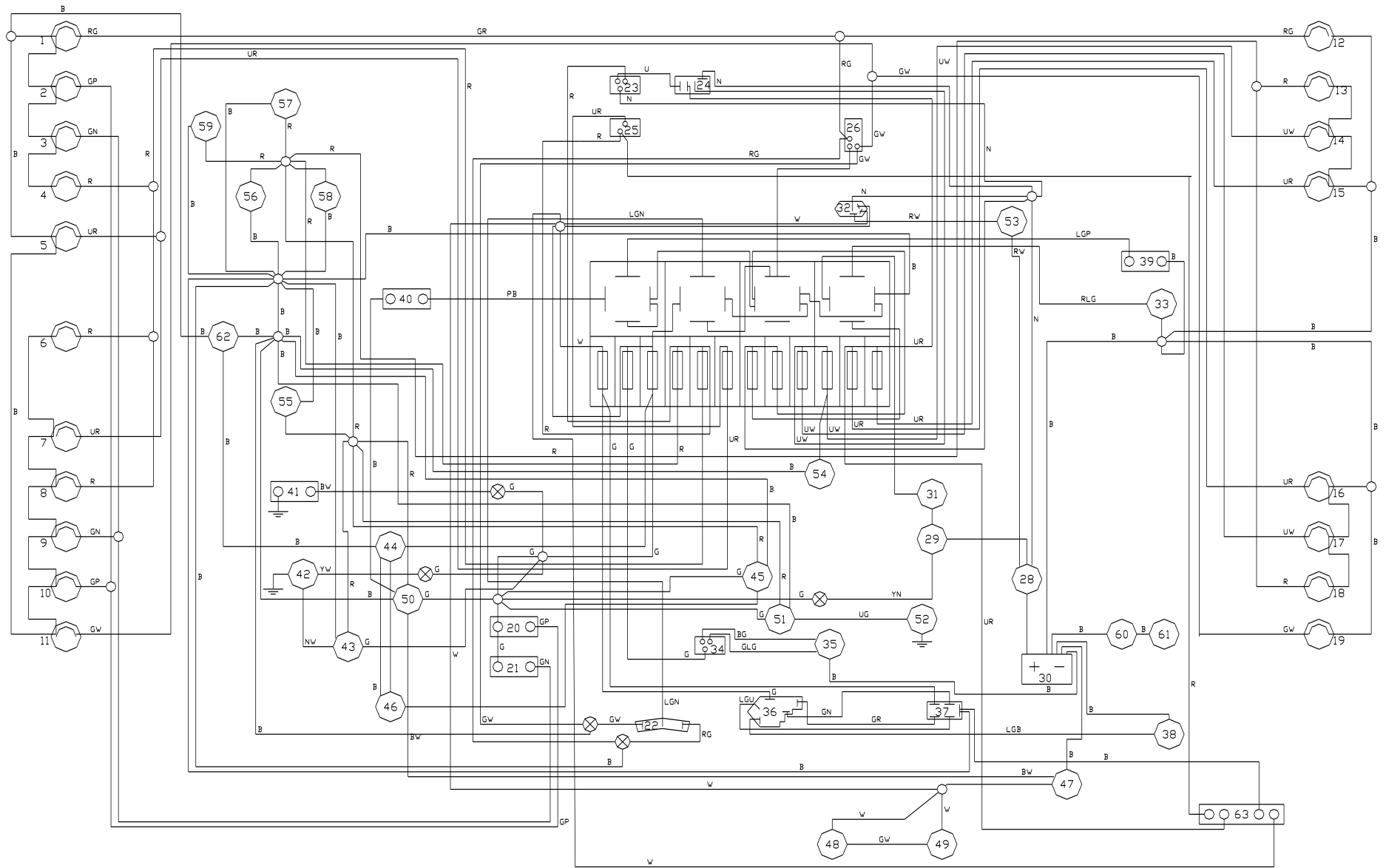
Wiring Diagram Number Code

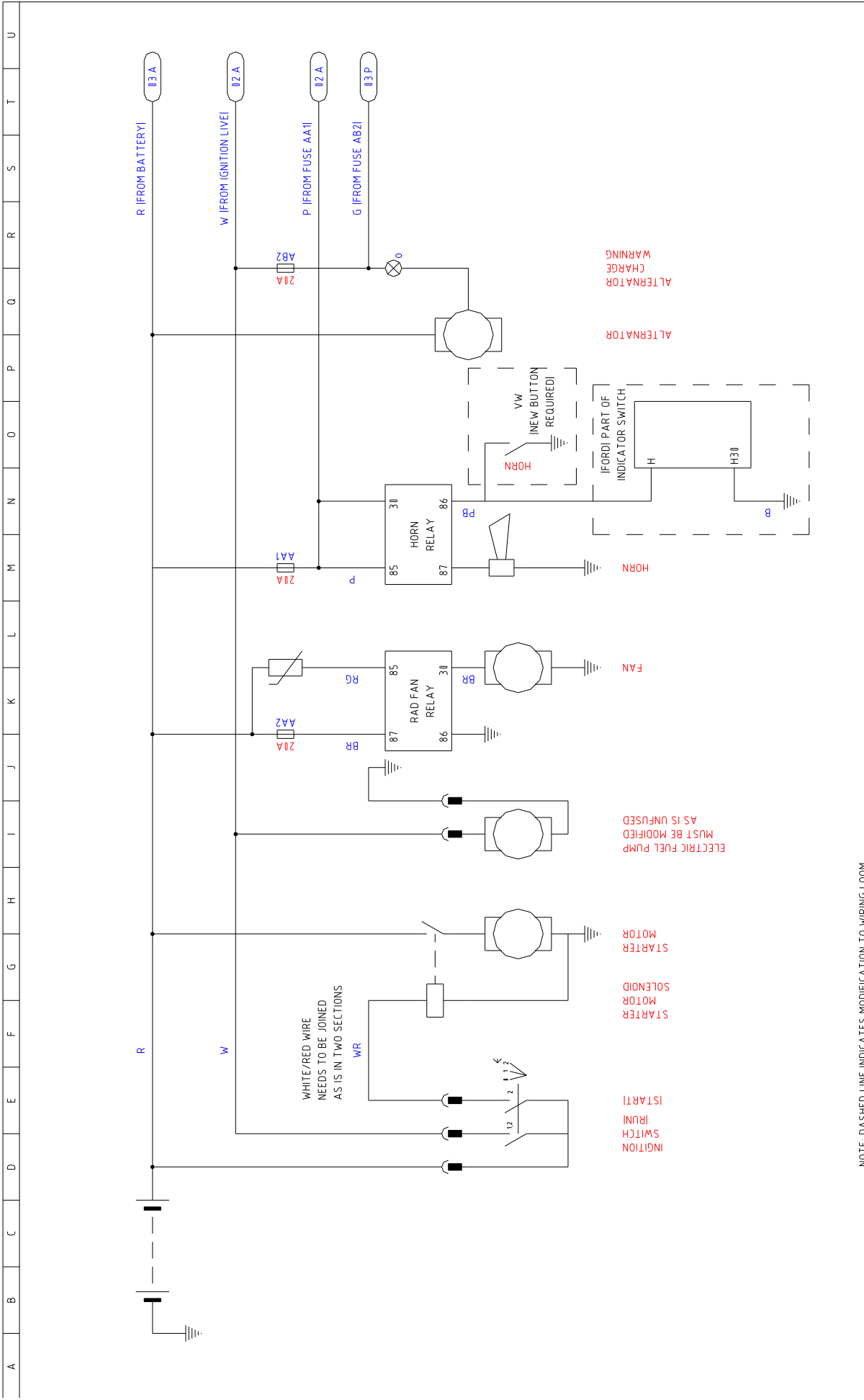
Item Number	Component
1	Rear near side indicator
2	Rear near side brake light
3	Rear near side reverse light
4	Rear near side side light
5	Rear near side fog light
6	Number plate light
7	Rear off side fog light
8	Rear off side side light
9	Rear off side reverse light
10	Rear off side brake light
11	Rear off side indicator
12	Front near side indicator
13	Front near side side light
14	Front near side main beam
15	Front near side dip beam
16	Front off side dip beam
17	Front off side main beam
18	Front off side side light
19	Front off side indicator
20	Brake light switch
21	Reverse light switch
22	Indicator light switch
23	Lights switch
24	Main/Dip beam switch
25	Fog lights switch
26	Hazard lights switch
28	Starter motor
29	Alternator
30	Battery
31	Thermostat
32	Ignition switch
33	Cooling fan
34	Heater fan switch
35	Heater fan
36	Wash/Wipe switch
37	Wiper motor connection
38	Washer motor
39	Horn
40	Horn switch
41	Handbrake switch
42	Oil pressure sender unit
43	Oil pressure gauge
44	Fuel pump
45	Fuel gauge
46	Fuel sender
47	Coil
48	Choke switch
49	Fuel cut off switch
50	Tachometer
51	Water temperature gauge
52	Temperature sender

53	Automatic gearbox connection
54	Main beam warning light
55	Speedometer illumination
56	Fog lights switch illumination
57	Lights switch illumination
58	Hazard lights switch illumination
59	Heater switch illumination
60	Engine mount bracket – earth
61	Front chassis – earth
62	Rear chassis – earth

Wiring Colour Codes

Black	B
White	W
Red	R
Yellow	Y
Green	G
Purple	P
Brown	N
Blue	U
Light	L



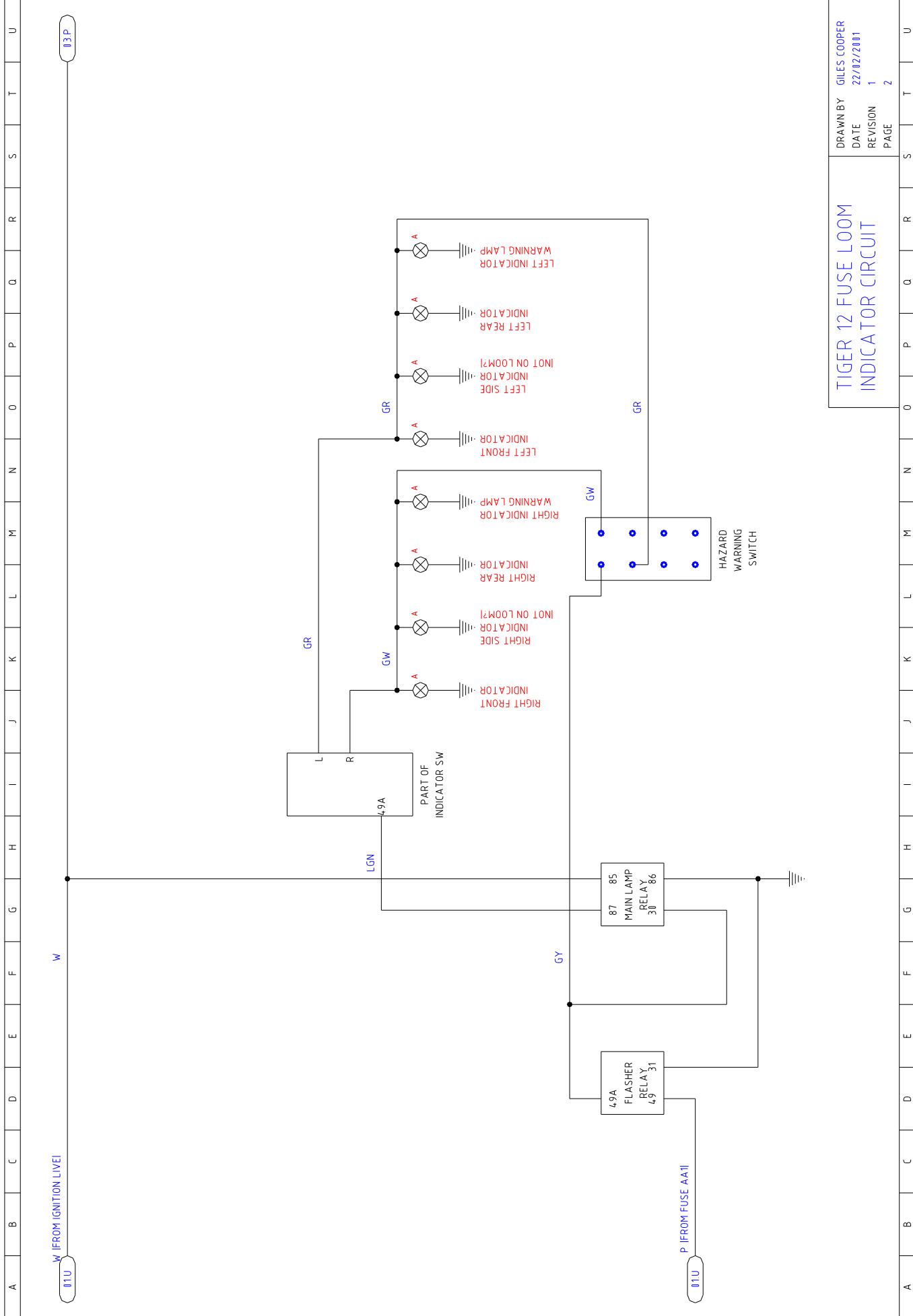


TIGER 12 FUSE LOOM
STARTING CIRCUIT

NOTE: DASHED LINE INDICATES MODIFICATION TO WIRING LOOM
NOTE: THESE DIAGRAMS COVER BOTH FORD AND VW CONTROL STALKS. WHEN A DIFFERENCE OCCURS THE SECTIONS ARE OUTLINED
IN --- LINES

DRAWN BY GILES COOPER
DATE 22/02/2001
REVISION 1
PAGE 1

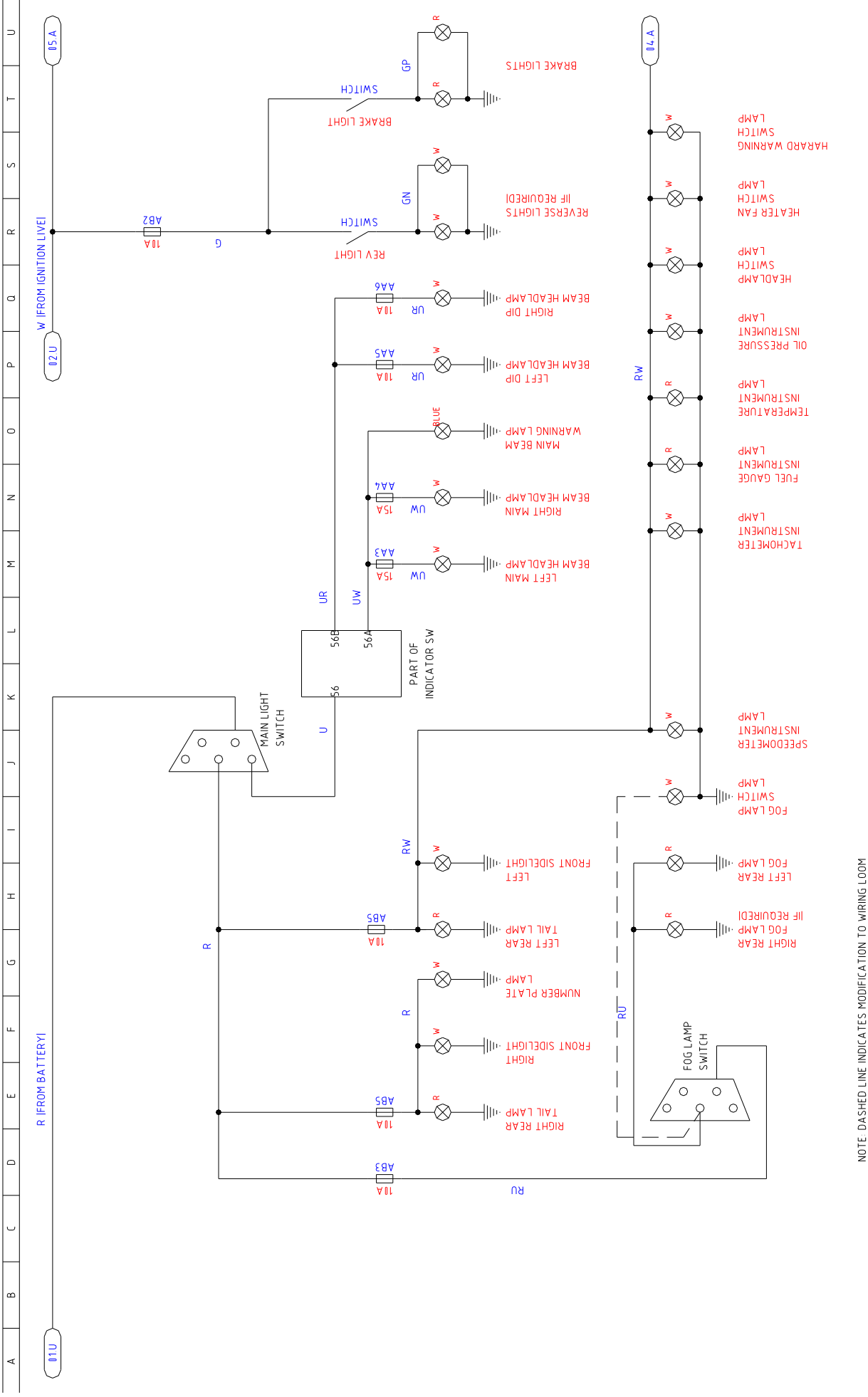
A	B	C	D	E	F	G	H	I	J	K	L	M	N	O	P	Q	R	S	T	U
---	---	---	---	---	---	---	---	---	---	---	---	---	---	---	---	---	---	---	---	---



TIGER 12 FUSE LOOM
INDICATOR CIRCUIT

DRAWN BY GILES COOPER
DATE 22/02/2001
REVISION 1
PAGE 2

A	B	C	D	E	F	G	H	I	J	K	L	M	N	O	P	Q	R	S	T	U
---	---	---	---	---	---	---	---	---	---	---	---	---	---	---	---	---	---	---	---	---



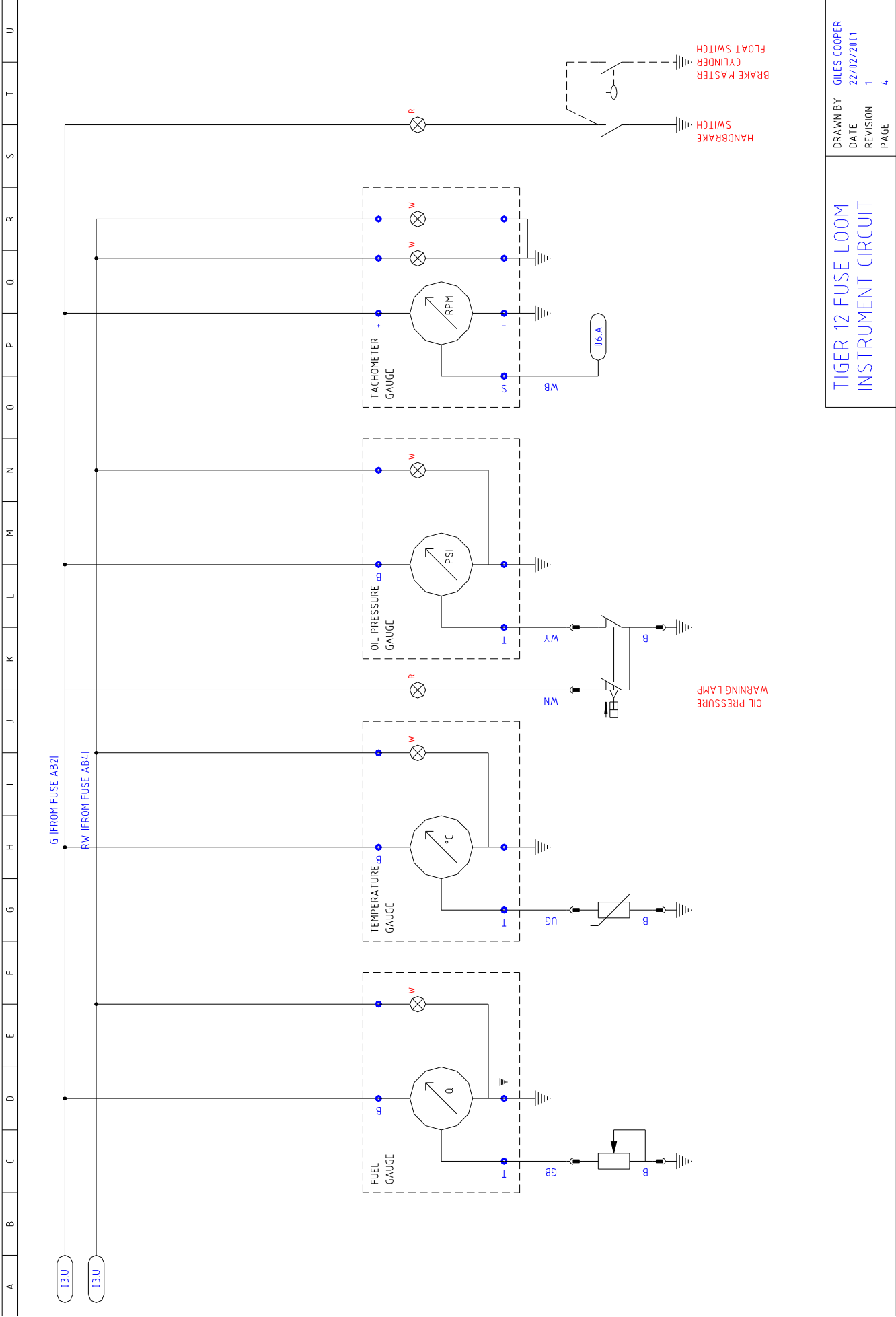
NOTE: DASHED LINE INDICATES MODIFICATION TO WIRING LOOM

TIGER 12 FUSE LOOM LIGHTING CIRCUIT

DRAWN BY GILES COOPER
 DATE 21/02/2001
 REVISION 1
 PAGE 3

A B C D E F G H I J K L M N O P Q R S T U

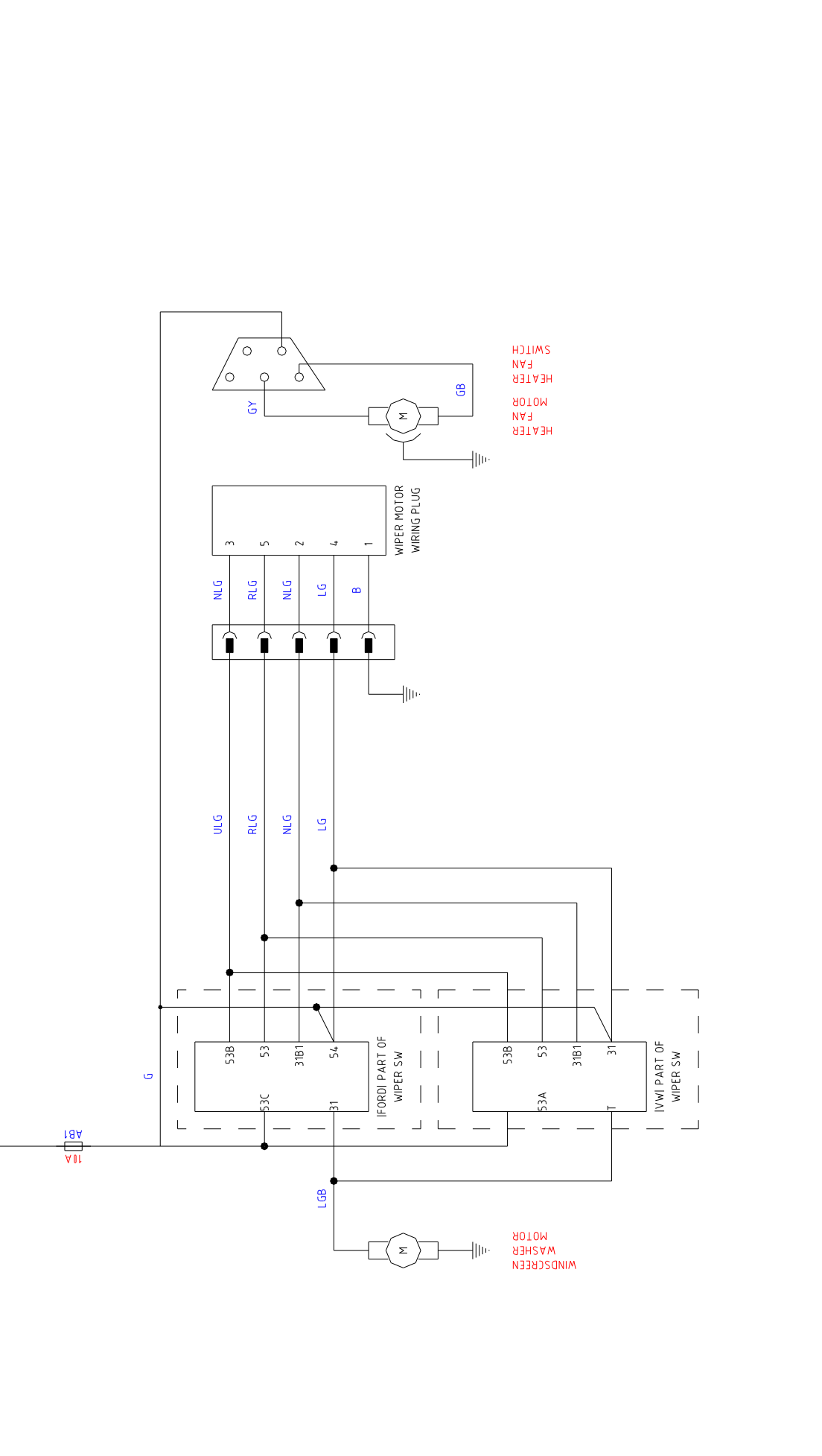
A B C D E F G H I J K L M N O P Q R S T U



TIGER 12 FUSE LOOM
INSTRUMENT CIRCUIT

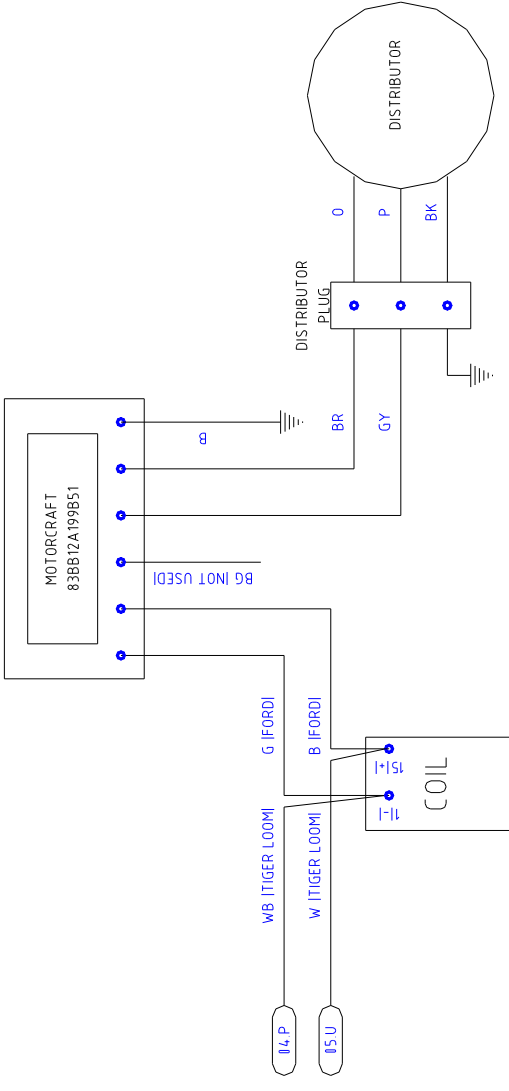
DRAWN BY GILES COOPER
DATE 22/02/2001
REVISION 1
PAGE 4

A	B	C	D	E	F	G	H	I	J	K	L	M	N	O	P	Q	R	S	T	U
---	---	---	---	---	---	---	---	---	---	---	---	---	---	---	---	---	---	---	---	---

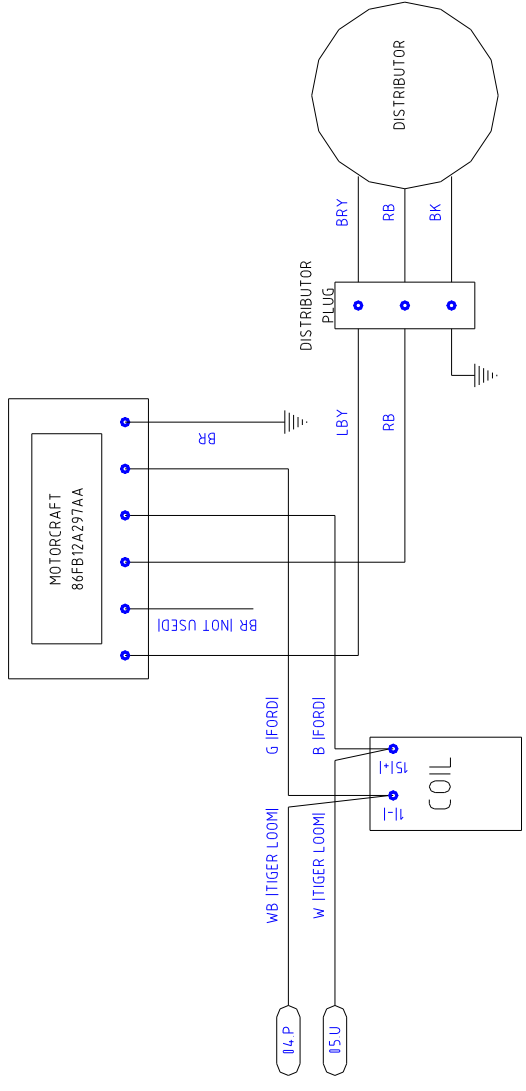


NOTE: THESE DIAGRAMS COVER BOTH FORD AND VW CONTROL STALKS. WHEN A DIFFERENCE OCCURS THE SECTIONS ARE OUTLINED
 IN — — — LINES

TIGER 12 FUSE LOOM
 WIPER & HEATER CIRCUIT



FORD TO 1987



FORD 1987 ON

TIGER 12 FUSE LOOM
IGNITION CIRCUIT

DRAWN BY GILES COOPER
DATE 22/02/2001
REVISION 1
PAGE 6